

# Thornborough Infant School

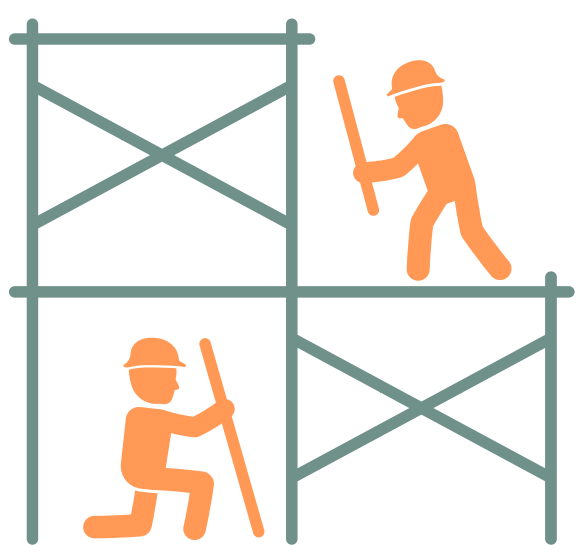
## SCHOOL DEVELOPMENT PLAN

### 2025-2026

# 1

### TRANSITIONS

To ensure that all pupils experience successful transitions into, within, and out of the school, with particular attention to emotional wellbeing, continuity of learning, and individual needs.



# 2

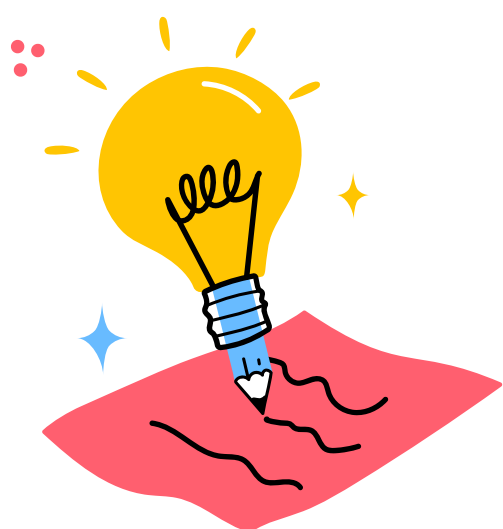
### SPECIAL EDUCATIONAL NEEDS

Enhancing support for pupils with Special Educational Needs (SEN) and ensuring inclusive practice across the school.

# 3

### PHONICS AND READING

To further strengthen the teaching of reading and phonics across the school and foster a culture that promotes a lifelong love of reading



# 4

### WRITING

To successfully implement a new writing curriculum that meets the needs of all learners, ensures progression and supports high-quality teaching

# 5

### MATHS

To strengthen the consistency, progression, and effectiveness of maths teaching across the school

